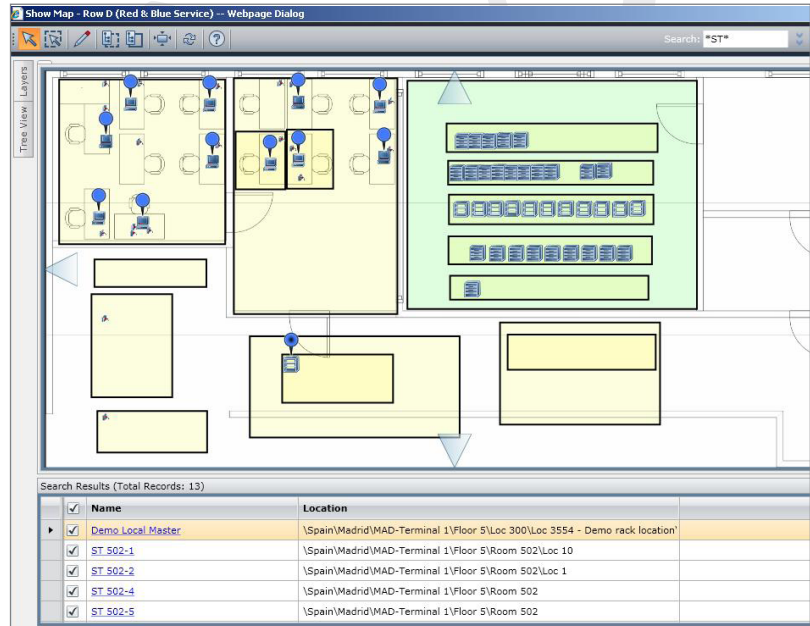


# New in PatchView and siteWIZ

## PatchView and siteWIZ IIM

solutions have been dramatically upgraded with the introduction of the new Active I Technology – an actionable graphical interface & platform. This latest technology brings this ‘lightening-speed,’ no-learning-curve cognition to all of our Intelligent Infrastructure Management solutions, making them even more powerful IT tools.”

Active I brings a new level of usability to the industry-leading IIM solutions. Developed using the Microsoft Silverlight framework, Active I offers a single, smart-web-based graphical point of entry to the system’s many management activities, making all tasks easier to learn and operate. Just as important, the system’s intuitive real-life visual interface enables managers to make the right decisions easily and quickly, resulting in smoother running networks, reduced downtime - and reduced tension throughout the IT organization.



As a web-based system, the Active I gives IT Managers, Facilities Managers and Integrators full visibility and control over communication rooms regardless of where they are actually located.

### Key Benefits:

- Greatly improved usability
  - Reduced time to perform any action - minimum number of mouse clicks per action
  - GUI-driven area and object selection
  - Visual enforcement of business logic
  - Capable of life-like graphical representations
  - Graphic representation allows instant bird’s eye view of an entire location and sub locations including spatial positioning
- Ease of Use
  - Single screen access to multiple functionalities
- Speed of implementation of management tasks
  - No longer any need to access multiple screens to reach different layers
- Intuitive implementation reduces time to learn
  - Familiar interface

Tasks that can be completed through the Active I include:

- Comprehensive cabinet management
- Planning of Moves, Adds and Changes within the map (while enforcing business policies as part of the provisioning activities)
- “Drag and Drop” maintenance of device records, including location moves, adds and changes
- Definition of the entire location hierarchy
- Full visibility into the relationship between entities
- Search requests, including zoom-to search result capability
- Control which device types are displayed
- Capacity layers