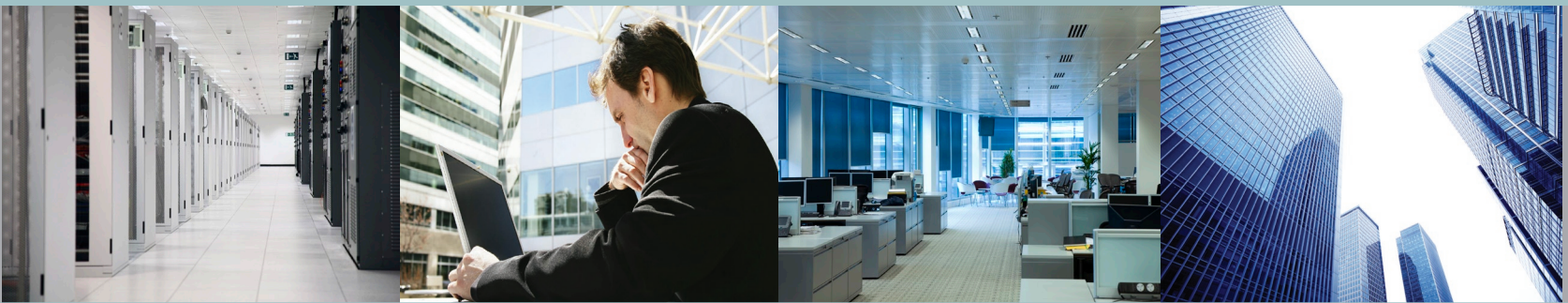


## When Everything Falls into Place



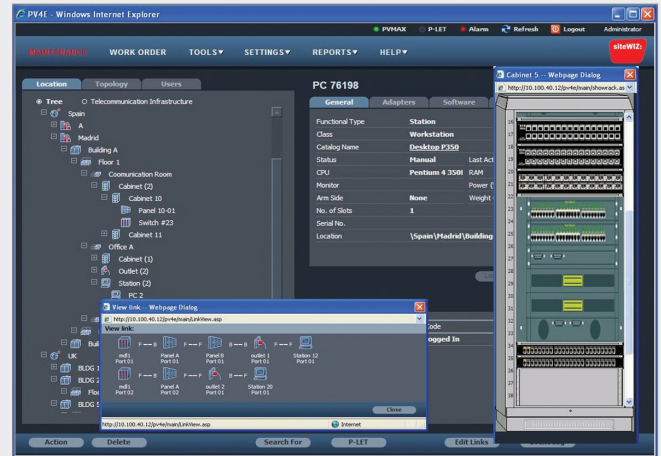
# siteWIZ

Our powerful siteWIZ™ software solution is the IT industry's leading Cable & Asset Management (CAM) solution for today's diversified networks.

siteWIZ is the ideal solution for all types of organizations, providing the accurate documentation and precise status monitoring you need to efficiently plan, manage, provision and maintain all aspects of the physical infrastructure. Its unique, field-proven features help you improve IT asset management and network utilization, automate and streamline daily operations and ensure information sharing across departments while ensuring data security.

Highly customizable and fully scalable, siteWIZ provides a single point of management for new or existing facilities, regardless of the size or complexity of your network. It is standards-compliant and vendor-neutral, critical features for protecting your existing investments and maintaining high productivity. The implementation of siteWIZ is smooth and painless and is based on a flexible and intuitive user interface.

siteWIZ can also be easily upgraded to PatchView™ intelligent infrastructure management (IIM) solution, making it a clear and easy pathway to comprehensive real-time management.



## siteWIZ in Datacenters

### ■ Equipment/server provisioning

siteWIZ contributes value at every stage of the provisioning process and takes physical server provisioning and network planning to a whole new level to help you achieve a quick and flawless installation for new networks.

siteWIZ's comprehensive information streamlines network maintenance and optimizes ongoing operations, assisting you to achieve a "production-ready" status faster and enjoy cash benefits.

### ■ Real-time power management

siteWIZ offers a powerful management tool to effectively monitor power consumption, identify and help flatten power peaks, identify power-hogging devices, provide policy based power planning across cabinets and halls, and assist in determining future power consumption.

siteWIZ gathers information from the "smart" power strips and power sensors of practically all vendors, and displays the collected information in an easy-to-use format. The information and alerts provided by siteWIZ can be used as an integrated data feed for provisioning, capacity management and many additional system applications.

### ■ Capacity monitoring

By keeping track of all equipment and services, siteWIZ makes it easy to trace stranded capacities, reduce CAPEX and OPEX, and make more effective procurement decisions. siteWIZ monitors the capacity and utilization of every IT infrastructure asset, and reports utilization information in a clear format to highlight capacity strain well before the resource exhaustion.

The result is optimized asset utilization, a smoother running facility with a longer life span and a reduction of new equipment purchases.



■ **Generic support for blade servers**

siteWIZ provides smooth, dynamic management of blade servers per cabinet, pass-through modules, switching modules. The siteWIZ Discovery Module automates the process of building an accurate virtual model of blade servers and blade enclosures.

■ **Automated IT asset management**

siteWIZ organizes detailed information regarding each device in the datacenter, including type and quantity of equipment, their various attributes, and relationships/dependencies between devices, creating "trusted source database". This database and its host of analysis and presentation functions are used as the basis for accurate asset management.

siteWIZ's automated Discovery Module discovers all IP devices, and automatically places them in the correct cabinet, using a unique algorithm. The module tracks each device as it moves through its life cycle (from commissioning to decommissioning), giving users a central console for tracking its physical location, status and attributes.

■ **Connectivity documentation**

siteWIZ documents the entire end-to-end connectivity of devices including all participating components, as well as pathways and conduits. The documentation includes comprehensive amount of details including services, attributes and general cable details.

## **siteWIZ in Workspace Environment**

■ **Comprehensive infrastructure documentation**

To minimize downtime and assure the flexibility of dynamic organizations, efficient cabling management is a fundamental necessity. To ease this task, siteWIZ offers a field-proven solution for automating most documentation build-up process, and for maintaining the integrity of the documentation.

siteWIZ's comprehensive documentation ensures a complete and detailed picture of the entire network infrastructure. Beyond cabling, siteWIZ documents infrastructure elements such as racks, cabinets, power and environmental monitoring systems, IP devices, etc.

■ **Real-time automated IT asset management**

siteWIZ's Discovery Module automates the task of discovering IT equipment (such as PCs and IP phones) and their geographical placement, eliminating the human error associated with this tedious process. Then, to keep the IT equipment information up to date, the system carries out periodic network scans and ongoing monitoring of switch traps, and uses the information collected to update its records.

■ **Moves, adds and changes (MACs)**

Flawless MAC execution requires accurate information from many sources: service availability, infrastructure readiness, VLANs and ports availability, resiliency patterns, and more. siteWIZ's Automated Provisioning Tool uses sophisticated algorithms to integrate all these requirements into a single decision process, resulting in a streamlined and automated MAC planning and implementation process.

Designed with an open architecture and comprehensive SDK, siteWIZ's Provisioning Tool can be integrated with other applications. Its powerful engine comes with a comprehensive out-of-the-box policy that can be further tailored to reflect the particular business rules of your own organization.

