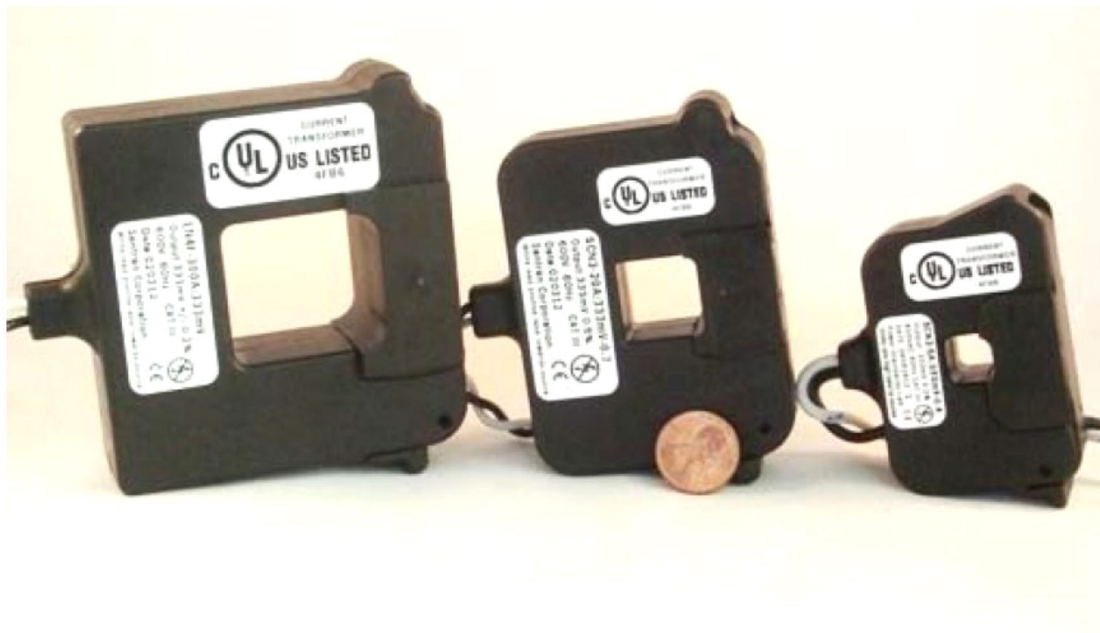




# *Current Transformers*

## Technical Data Sheet and Order Form



## FEATURES:

- Listed to UL 2808 and CSAC22.2 61010-1
- Revenue Grade Accuracy
- 75A to 600A Full Load Amps (FLA) 50/60Hz
- Measurement CAT III / 600V Rated
- Low Current Sensitivity
- Shrouded Split Core Current Transformers
- Thick plastic hinged snap lid top and latch
- Nickel Core

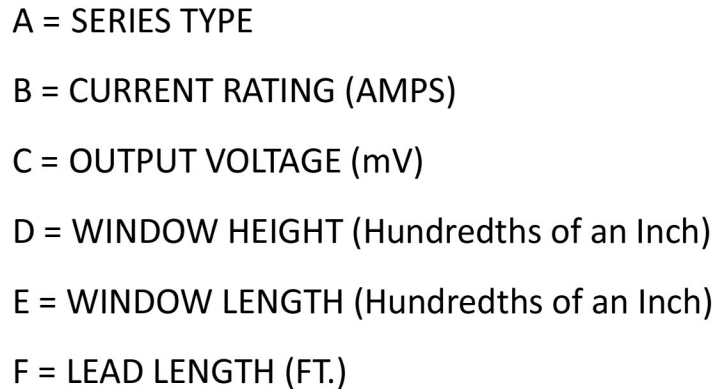


The CTNx series current transformers are shrouded nickel core with snap, locking tilt top and classified as XOBA for direct installation under UL2808 and CSA C22.2 No.61010-1. These are measurement category III current transformers for use in installations over insulated or bare conductors. The CTNx series have been tested to 100°C for use within Industrial control panels that meet the requirements of UL508. An internal burden resistor sets the full scale output voltage to 250mV and serves as an alternative to CTs that require shorting blocks to prevent open circuit shock.

### Model CTNx Series Specifications:

Type	Specification
Input Current	AC current, sine wave, 50 or 60Hz
Current (Amps)	75, 100, 150, 200, 250, 300, 350, 400, 500, 600 Amps
Voltage Rating	600VAC rms, CAT III per 61010-1
Crest Factor	Set to 1.414 times full scale rated current
Bandwidth	40Hz to 400Hz
Output Voltage	250 mV
Accuracy	±0.2%; Class 0.5 per IEC 60044-1, Table 11
Interface Resistance of Meters	> 50,000 Ohms
Temperature range	-40°C to 55°C
Altitude	Up to 2000 meters
Pollution Degree	2
Humidity	Up to 95%, non-condensing
Construction	Nickel-core, Molded case 120°C UL recognized plastic
Lead wires	B/W twisted pair 18 AWG MTW UL1015, 600V, 105°C, double insulated
Window Opening	CTN2 = .40in [10.16mm] CTN3 = .70in [17.78mm] CTN4 = 1.25in [31.75mm]

A	B	C	D	E	F
1	1	1	1	1	1
2	1	1	1	1	1
3	1	1	1	1	1
4	1	1	1	1	1
5	1	1	1	1	1
6	1	1	1	1	1
7	1	1	1	1	1
8	1	1	1	1	1
9	1	1	1	1	1
10	1	1	1	1	1
11	1	1	1	1	1
12	1	1	1	1	1
13	1	1	1	1	1
14	1	1	1	1	1
15	1	1	1	1	1
16	1	1	1	1	1
17	1	1	1	1	1
18	1	1	1	1	1
19	1	1	1	1	1
20	1	1	1	1	1
21	1	1	1	1	1
22	1	1	1	1	1
23	1	1	1	1	1
24	1	1	1	1	1
25	1	1	1	1	1
26	1	1	1	1	1
27	1	1	1	1	1
28	1	1	1	1	1
29	1	1	1	1	1
30	1	1	1	1	1
31	1	1	1	1	1
32	1	1	1	1	1
33	1	1	1	1	1
34	1	1	1	1	1
35	1	1	1	1	1
36	1	1	1	1	1
37	1	1	1	1	1
38	1	1	1	1	1
39	1	1	1	1	1
40	1	1	1	1	1
41	1	1	1	1	1
42	1	1	1	1	1
43	1	1	1	1	1
44	1	1	1	1	1
45	1	1	1	1	1
46	1	1	1	1	1
47	1	1	1	1	1
48	1	1	1	1	1
49	1	1	1	1	1
50	1	1	1	1	1
51	1	1	1	1	1
52	1	1	1	1	1
53	1	1	1	1	1
54	1	1	1	1	1
55	1	1	1	1	1
56	1	1	1	1	1
57	1	1	1	1	1
58	1	1	1	1	1
59	1	1	1	1	1
60	1	1	1	1	1
61	1	1	1	1	1
62	1	1	1	1	1
63	1	1	1	1	1
64	1	1	1	1	1
65	1	1	1	1	1
66	1	1	1	1	1
67	1	1	1	1	1
68	1	1	1	1	1
69	1	1	1	1	1
70	1	1	1	1	1
71	1	1	1	1	1
72	1	1	1	1	1
73	1	1	1	1	1
74	1	1	1	1	1
75	1	1	1	1	1
76	1	1	1	1	1
77	1	1	1	1	1
78	1	1	1	1	1
79	1	1	1	1	1
80	1	1	1	1	1
81	1	1	1	1	1

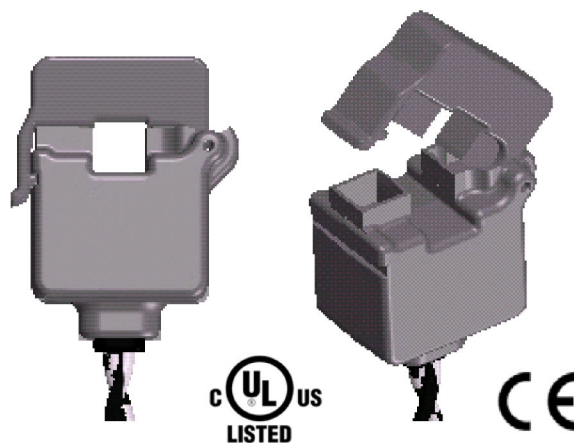


\*Normally Stocked Product Offering  
 \*\* Sizes shown are Standard Offering  
 Custom sizes are available (requires longer lead times)

= Type CTN3, 150 Amp rating, 250mV output voltage, .70 inch window height,  
.70 inch window width, with a 12ft lead length

## FEATURES:

- Listed to UL2808, CAN/CSA C22 61010-1-04
- Accuracy  $\pm 0.5\%$  per IEC 60044-1 Table 11
- Can be used on bare non-insulated conductors
- Category III Field Installable
- Shrouded Split Core Current Transformer
- Thick plastic hinged snap and tilt lid top and latch



The Model CTxF iron-core shrouded split current transformer is an indoor transducer designed for installation within breaker panels and industrial control cabinets. The snap and pull hinged top and latch simplifies installation over wires. CTxF series CTs are UL Listed to UL2808 and CSA CAN C22.2 61010-1 for energy metering equipment, CAT III. The CT is provided with an internal resistor that produces a low voltage AC designed output signal for 250mV at 100% of the rated current. Comes with black and white twisted pair 600V (UL1015) output leads for  $V_{AC}$  output type and red and black for  $V_{DC}$  output type. The CTs can be installed over either bare or insulated conductors.

### Model CTxF Series Specifications:

Type	Specifications
Input Current	AC current, sine wave, 50 or 60Hz
Current (Amps)	75, 100, 150, 200, 250, 300 Amps
Voltage Rating	250VAC rms (CTLF); 600VAC rms (CTBF); CAT III per UL2808 & CSA C22.2 61010-1
Crest Factor	Set to 1.414 times full scale rated current
Bandwidth	40Hz to 400Hz
Output Voltage	250 mV
Accuracy	$\pm 0.5\%$ range from 2% to 120% rated current; Class 0.5 per IEC 60044-1, Table 11
Interface Resistance of Meters	> 50,000 Ohms
Temperature range	-40°C to 55°C
Altitude	Up to 2000 meters
Pollution Degree	2
Humidity	Up to 95%, non-condensing
Construction	Iron-core, Molded case 120°C UL Listed, XOBA per E361441
Lead wires	B/W twisted pair 18 AWG MTW UL1015, 600V, 105°C, double insulated
Window Opening	CTLF = .35in [8.89mm] CTBF = 1.00in [25.4mm]



CATALOG NUMBER:    \_ \_ \_ \_ - \_ \_ \_ - \_ \_ \_ - \_ \_ \_ - \_ \_ \_ - \_ \_ \_

A                      B                      C                      D                      E                      F

A = SERIES TYPE

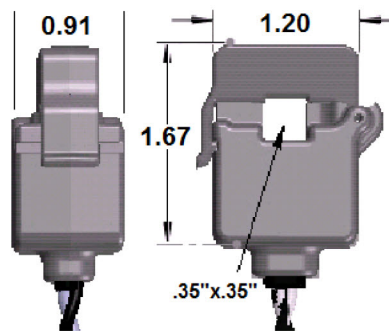
B = CURRENT RATING (Amps)

C = OUTPUT VOLTAGE (mV)

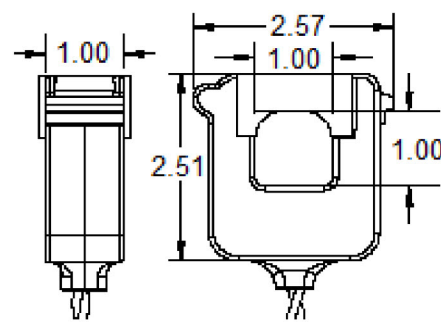
D = WINDOW HEIGHT (Hundredths of an Inch)

E = WINDOW WIDTH (Hundredths of an Inch)

F = LEAD LENGTH (FT)



MODEL CTLF



MODEL CTBF

A	SERIES TYPE	CTLF	CTBF
B	CURRENT RATING (AMPS)	75*, 100	75, 100, 150*, 200, 250, 300
C	OUTPUT VOLTAGE (mV)	250	250
D	WINDOW WIDTH (Hundredths of an Inch)	0035	0100
E	WINDOW HEIGHT (Hundredths of an Inch)	0035	0100
F	LEAD LENGTH** (FT)	12*, 30*	12*, 30*

\*Normally Stocked Product Offering

\*\* Sizes shown are Standard Offering

Custom sizes are available (requires longer lead times)

**EXAMPLE: CTBF - 0075 - 250 - 0035 - 0035 - 30**

= Type CTBF, 75 Amp rating, 250mV output voltage, .35 inch window height, .35 inch window width,  
30ft lead length



**FEATURES:**

- Select any current up to 6000A 50/60Hz
- Listed to UL2808 and CSA C22.2 No. 61010-1 CAT IV
- Revenue grade Class 0.5
- Universal molds to any custom window size



The CTSF split current transformers are indoor type for Measurement Category Class IV for use in energy monitoring and general electrical current sensing for field installations. The transformers have been designed to meet the requirements of UL2808 and CSA C22.2 No. 61010-1. They are provided with internal burden resistors to set the AC output voltage. Customer selects full load input current and with window size. The Model CTSF can be used in both commercial and industrial applications.

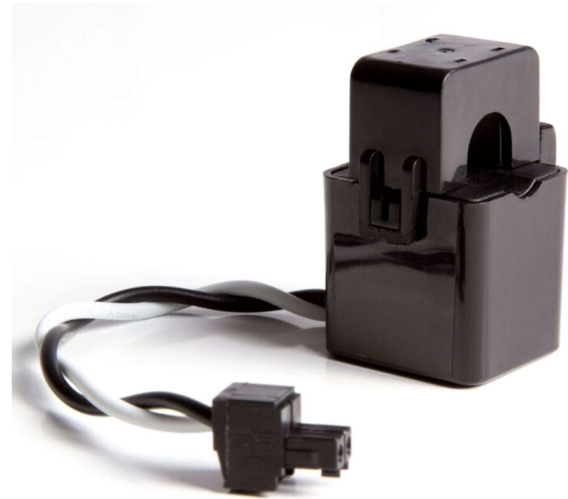
**Model CTSF Series Specifications:**

Type	Specifications
Input Current	AC current, sine wave, 50 or 60Hz
Current (Amps)	400 - 10,000 Amps
Voltage Rating	600VAC rms; Tested CAT IV per CSA C22.2 61010-1
Crest Factor	Set to 1.414 times full scale rated current
Bandwidth	50Hz to 400Hz
Output Voltage	250 mV
Accuracy	±0.5% range from 2% to 120% rated current; Class 0.5 per IEC 60044-1, Table 11
Interface Resistance of Meters	Must be > 100,000 Ohms
Temperature range	-40°C to 55°C
Altitude	Up to 2000 meters
Pollution Degree	2
Humidity	Up to 95%, non-condensing
Construction	Iron-core, UL approved per UL2808 CAT IV to 120°
Lead wires	B/W twisted pair 18 AWG MTW UL1015, 600V, 105°C, double insulated
Window Opening	Customer Specified



**FEATURES:**

- High sensitivity, linearity, and minimum phase shift
- Available in 75A, 50/60Hz
- CSA C22.2 No. 61010-1 CAT IV
- Revenue grade Class 1 Accuracy
- Universal molds to any custom window size
- Ferrite core material



The CTMF miniature split-core current transformers feature a small physical size to accommodate tight-space applications and a mechanical hinge for multiple open/ close actions. The ferrite split-core design permits easy non-contact installation and current measurements through magnetic field induction. Installation does not require the primary wire that is being measure be taken offline. The transformers have been designed to meet IEC 60044-1 accuracy and CSA C22.2 No. 61010-1 safety requirements. An internal burden resistor sets the full scale output voltage to 250mV and serves as an alternative to CTs that require shorting blocks to prevent open circuit shock protection for the installer.

**Model CTMF Series Specifications:**

Type	Specifications
Input Current	AC current, sine wave, 50 or 60Hz
Current (Amps)	75 Amps
Voltage Rating	720VAC rms, CAT IV per 61010-1
Crest Factor	Set to 1.414 times full scale rated current
Bandwidth	50Hz to 400Hz
Output Voltage	250 mV
Accuracy	±1%; Class 1 per IEC 60044-1, Table 11
Interface Resistance of Meters	> 100,000 Ohms
Temperature range	-15°C to 60°C
Altitude	Up to 2000 meters
Pollution Degree	2
Humidity	Up to 95%, non-condensing
Construction	Ferrite core; Epoxy encapsulated; Nylon UL flame retardant rating 94V-0 case
Lead wires	B/W twisted pair 22 AWG, UL1015, 600V, 105°C, double insulated
Window Opening	.40in [10.16mm]



CATALOG NUMBER:    \_ \_ \_ \_ - \_ \_ \_ - \_ \_ \_ - \_ \_ \_ - \_ \_ \_ - \_ \_ \_

A                      B                      C                      D                      E                      F

A = SERIES TYPE

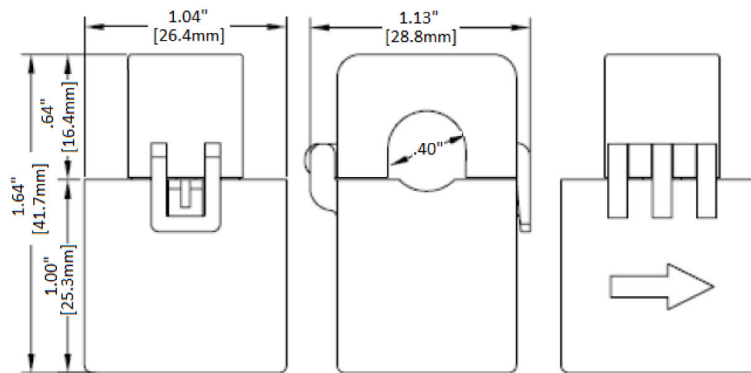
B = CURRENT RATING (Amps)

C = OUTPUT VOLTAGE (mV)

D = WINDOW HEIGHT (Hundredths of an Inch)

E = WINDOW WIDTH (Hundredths of an Inch)

F = LEAD LENGTH (FT)



A	SERIES TYPE	CTMF
B	CURRENT RATING (AMPS)	75*
C	OUTPUT VOLTAGE (mV)	250
D	WINDOW WIDTH (Hundredths of an Inch)	0040
E	WINDOW HEIGHT (Hundredths of an Inch)	0040
F	LEAD LENGTH** (FT)	14 * -***, 02*, 12*, 30*

\*Normally Stocked Product Offering

\*\* Sizes shown are Standard Offering

\*\*\* 14 = 4 Inch Lead Length

Custom sizes are available (requires longer lead times)

**EXAMPLE: CTMF - 0075 - 250 - 0040 - 0040 - 14**

= CTMF mini CT type , 75 Amp rating, 250mV output voltage, .40 inch window height, .40 inch window width, 4 inch lead length